

PROMOTION



RÖHM STEEL ICONS 2017-3

Valid until 31. March 2018

RÖHM
driven by technology

Drill chucks with mount SDS plus and Hex

A01

EXTRA-RV 80 with SDS plus mounting shank and radial locking, metal design



| Item no. | Size | Clamping capacity mm | Mount | Retaining ring | External Ø mm | Length opened without SDS mount mm | Length closed without SDS mount mm | Gross Price | Promotion Price |
|----------|------|----------------------|--------------------|----------------|---------------|------------------------------------|------------------------------------|--------------------|-----------------|
| 1288566 | 13 | 1,5-13 | 1/2"-20 / SDS plus | • | 42,7 | 64,5 | 72,4 | 50,00 € | 40.00 € |

Use exclusively with hammer function deactivated

Buy online now:
EXTRA-RV 80 with SDS plus mounting shank

A01

EXTRA-RV 80 for impact screwdriver mounting 1/4" Hex, plastic design, specially suited for impact screwdrivers (eccentricity)



| Item no. | Size | Clamping capacity mm | Mount | Retaining ring | External Ø mm | Length opened without hexagon mm | Length closed without hexagon mm | Gross Price | Promotion Price |
|----------|------|----------------------|----------|----------------|---------------|----------------------------------|----------------------------------|--------------------|-----------------|
| 1178269 | 10 | 1-10 | 1/4" Hex | • | 42,7 | 55 | 63,1 | 35,60 € | 28.50 € |

Buy online now:
EXTRA-RV 80 with Hex mounting

A01

PRIMA with SDS plus adapter



| Item no. | Clamping capacity mm | Mount | External Ø mm | Length opened without SDS mount mm | Length closed without SDS mount mm | Key size | Gross Price | Promotion Price |
|----------|----------------------|--------------------|---------------|------------------------------------|------------------------------------|----------|--------------------|-----------------|
| 1288568 | 1,5-13 | 1/2"-20 / SDS plus | 42,9 | 59 | 74 | S2A | 35,50 € | 28.40 € |

Only with switched-off impact function

Buy online now:
PRIMA with SDS plus adapter

A01

PRIMA 6L, hexagon mounting



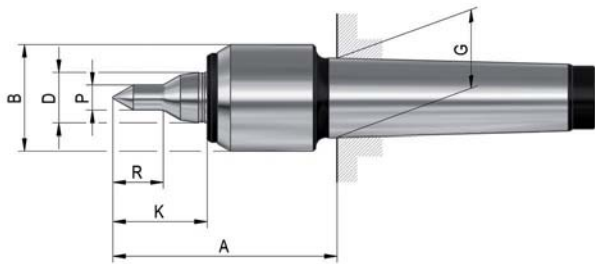
| Item no. | Size | Type | Clamping capacity mm | Mount | External Ø mm | Length opened mm | Length closed mm | Key size | Gross Price | Promotion Price |
|----------|------|------|----------------------|---------|---------------|------------------|------------------|----------|--------------------|-----------------|
| 368292 | 6 | L | 0,5-6,5 | hexagon | 29,3 | 42,5 | 53 | S14 | 30,40 € | 24.30 € |

For clockwise and counterclockwise rotation

Only with switched-off impact function

Buy online now:
PRIMA 6L with hexagon mounting

Slim - profiled, extended centre point



APPLICATION

For counter-clamping workpieces on turning and grinding machines. Especially suited for cramped work area between centre point and workpiece.

TYPE

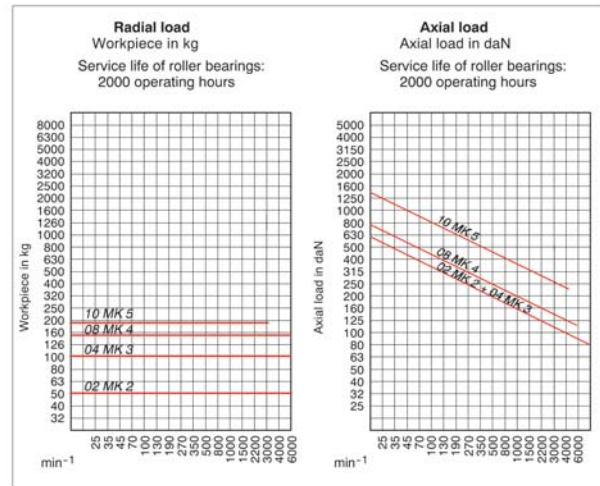
Compact design with minimum casing diameter. With extended and profiled centre point.

CUSTOMER BENEFITS

- ① Enlarged work area and better workpiece accessibility thanks to narrow casing diameter and extended and profiled centre point
- ② Maximum rigidity at high speeds thanks to compact design
- ③ Maximum concentricity deviation of 0.008 mm for maximum precision

TECHNICAL FEATURES

- Body hardened and ground
- Tip angle 60°



A06

Slim with small casing diameter and profiled and extended centre point, body hardened and ground - tip angle 60°

| Item no. | 1241695 | 1243505 | 1243507 | 1243509 |
|---------------------------------|-----------------|-----------------|-----------------|-----------------|
| Promotion Price | 187.00 € | 196.00 € | 261.00 € | 378.00 € |
| Gross Price | 221.00 € | 231.00 € | 308.00 € | 445.00 € |
| Mount MT | 2 | 3 | 4 | 5 |
| Size | 02 | 04 | 08 | 10 |
| A mm | 73 | 74 | 88,5 | 119 |
| B mm | 32 | 34 | 42 | 58 |
| D mm | 15 | 15 | 20 | 30 |
| G mm | 17,78 | 23,825 | 31,267 | 44,399 |
| K mm | 29,5 | 32 | 37,5 | 51,5 |
| P mm | 6 | 8 | 10 | 12 |
| R mm | 12 | 16 | 20 | 26 |
| Workpiece weight max. kg | 50 | 100 | 150 | 180 |
| Concentricity deviation max. mm | 0,008 | 0,008 | 0,008 | 0,01 |
| Speed max. min ⁻¹ | 7000 | 7000 | 6300 | 4300 |
| Weight approx. g | 320 | 460 | 1000 | 2600 |
| Spare live centres | 1241758 | 1241759 | 1241760 | 1241761 |



Buy online now:
Live centre Slim with profiled and extended centre point

KRF - without base plate

Lever scroll chuck KRF



APPLICATION

3- and 4-jaw chuck for positioning and conveying workpieces, e.g. on measuring machines.

TYPE

Lever scroll chuck in cast iron version. 3-jaw and 4-jaw version.

CUSTOMER BENEFITS

- ⊕ Easy clamping of the workpiece by turning the clamping ring
- ⊕ Sizes 125 - 200: 4 setscrews for fine adjustment
- ⊕ Cast iron body
- ⊕ Jaws in chuck ground out for concentricity

TECHNICAL FEATURES

- 6 jaw chuck for grinding twist drills on request available

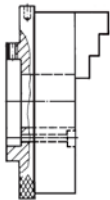


Buy online now:
KRF, 3-jaws



Buy online now:
KRF, 4-jaws

A09
Lever scroll chuck KRF, cylindrical centre mount



| Size | ZA mm | Through-hole mm | 3-jaw chuck with inside and outside jaw | Promotion Price | 4-jaw chuck with inside and outside jaw | Promotion Price | Torque Nm | Total clamping force kN |
|------|-------|-----------------|---|-----------------|---|-----------------|-----------|-------------------------|
| 70 | 48 | 16 | 148793 ¹⁾ | 351.00 € | 148794 | 413.00 € | 12 | 2,5 |
| 110 | 75 | 26 | 148757 | 553.00 € | 148772 | 648.00 € | 26 | 3,2 |
| 125 | 70 | 35 | 150757 | 628.00 € | 150758 | 738.00 € | 36 | 3,5 |
| 160 | 78,5 | 52 | 150759 | 804.00 € | 150760 | 949.00 € | 50 | 4 |
| 200 | 115 | 64 | 150761 | 1,005.00 € | 150762 | 1,180.00 € | 60 | 4,5 |

¹⁾ Jaws reversible
 Sizes 125 - 200: 4 setscrews for fine adjustment
 Further sizes and mountings available on request

KRF - with base plate



APPLICATION

3-jaw chuck with base plate for positioning and conveying workpieces, e.g. on measuring machines.

TYPE

Lever scroll chuck in cast iron version.

CUSTOMER BENEFITS

- ⊕ Easy clamping of the workpiece by turning the clamping ring
- ⊕ Sizes 125 - 200: 4 setscrews for fine adjustment
- ⊕ Cast iron body

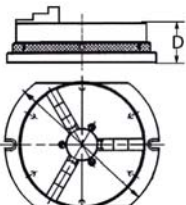
TECHNICAL FEATURES

- Mounted in the chuck with one set of jaws stepped outward (BB)
- One set of jaws stepped inward (DB)
- Size 70 with reversible jaws
- Mounting screws



Buy online now:
KRF Lever scroll chuck with base plate

A09
Lever scroll chuck with base plate, 3-jaw-chuck cast iron body



| Item no. | Size | Through-hole mm | D mm | Torque Nm | Total clamping force kN | Promotion Price |
|----------------------|------|-----------------|------|-----------|-------------------------|-----------------|
| 150595 ¹⁾ | 70 | 16 | 46,4 | 12 | 2,5 | 528.00 € |
| 150596 | 110 | 26 | 50 | 26 | 3,2 | 830.00 € |
| 150597 | 125 | 35 | 59 | 36 | 3,5 | 949.00 € |
| 150598 | 160 | 52 | 59 | 50 | 4 | 1,210.00 € |
| 150599 | 200 | 64 | 69 | 60 | 4,5 | 1,510.00 € |

¹⁾ Jaws reversible
 Further sizes and mountings available on request

KFD-HS - 3-jaw, serration 90°



APPLICATION

Premium power chucks with through-hole for maximum speeds with simultaneously low centrifugal force losses.

TYPE

Power chuck available with cylindrical center mount or short taper mount. 3-jaw version with serration 90° or tongue and groove. 2-jaw version with serration 90°.

CUSTOMER BENEFITS

- ③ Low centrifugal force losses and high speeds thanks to special wedge hook system with annular piston
- ③ Larger than average through-hole for wide range of workpieces
- ③ Maximum precision thanks to rigid chuck construction
- ③ If necessary quick conversion to a different spindle nose by simply exchanging the centering adapter

TECHNICAL FEATURES

- Universal construction of the piston connection (piston does not project into the spindle bore area, even with the piston position moved back)
- Long jaw guide
- Clamping inserts can be used for bar machining (special version)

Included in the scope of delivery:

Chuck, chuck and jaw mounting screws, mounting wrench, slot nuts (without top jaws)

C 15

3-jaw power chuck KFD-HS, with tightening thread, serration 90°

Cylindrical center mount, connection dimensions in acc. with DIN 6353/short taper mount (KK) for ISO 702-1 (DIN 55026/55021)

| Item no. | 149406 | 149405 | 144258 | 142690 | 143692 | 142478 | 144259 | 143893 | 143888 | 142479 |
|---|-------------------|--------------------|-------------------|-------------------|-------------------|-------------------|-------------------|-------------------|-------------------|-------------------|
| Promotion Price | 1,385.00 € | 1,520.00 € | 1,770.00 € | 1,945.00 € | 1,770.00 € | 1,945.00 € | 1,975.00 € | 2,165.00 € | 1,975.00 € | 2,165.00 € |
| Gross Price | 1,540.00 € | 1,690.00 € | 1,970.00 € | 2,165.00 € | 1,970.00 € | 2,165.00 € | 2,195.00 € | 2,410.00 € | 2,195.00 € | 2,410.00 € |
| Size | 110 | 110 | 140 | 140 | 160 | 160 | 175 | 175 | 200 | 200 |
| Jaw travel B mm | 3,2 | 3,2 | 3,2 | 3,2 | 4 | 4 | 4 | 4 | 5 | 5 |
| C mm | 78 | 86 | 88 | 92 | 102 | 108 | 102 | 108 | 107 | 112 |
| Mount D | ZA 60 | KK 4 ¹⁾ | ZA 120 | KK 5 | ZA 140 | KK 5 | ZA 140 | KK 5 | ZA 170 | KK 6 |
| Wedge stroke K mm | 12 | 12 | 12 | 12 | 15 | 15 | 15 | 15 | 18,5 | 18,5 |
| Through hole M max. mm | 26 | 26 | 37 | 37 | 46 | 46 | 56 | 56 | 66 | 66 |
| Q mm | M34x1,5 | M34x1,5 | M44x1,5 | M44x1,5 | M54x1,5 | M54x1,5 | M65x1,5 | M65x1,5 | M74x1,5 | M74x1,5 |
| Maximum draw bar pull kN | 18 | 18 | 25 | 25 | 35 | 35 | 40 | 40 | 48 | 48 |
| Max. total clamping force kN | 48 | 48 | 70 | 70 | 86 | 86 | 95 | 95 | 110 | 110 |
| Max. admissible speed min ⁻¹ | 8500 | 8500 | 8000 | 8000 | 8000 | 8000 | 7000 | 7000 | 6500 | 6500 |
| Moment of inertia J kgm ² | 0,007 | 0,007 | 0,022 | 0,022 | 0,0415 | 0,0415 | 0,057 | 0,057 | 0,1 | 0,1 |
| Weight without jaws approx. kg | 5 | 5 | 9 | 9 | 12 | 12 | 15 | 15 | 20 | 20 |

¹⁾ ISO 702-1 (DIN 55026) only (DIN 55021 on request)

| Item no. | 161725 | 144260 | 143726 | 142691 | 144261 | 143748 | 144262 | 143749 | 144263 | 143750 | 143751 |
|---|-------------------|-------------------|-------------------|-------------------|-------------------|-------------------|-------------------|-------------------|-------------------|-------------------|-------------------|
| Promotion Price | 2,585.00 € | 2,585.00 € | 2,845.00 € | 2,845.00 € | 3,160.00 € | 3,475.00 € | 3,160.00 € | 3,475.00 € | 6,210.00 € | 6,860.00 € | 6,860.00 € |
| Gross Price | 2,875.00 € | 2,875.00 € | 3,165.00 € | 3,165.00 € | 3,515.00 € | 3,865.00 € | 3,515.00 € | 3,865.00 € | 6,905.00 € | 7,625.00 € | 7,625.00 € |
| Size | 250 | 250 | 250 | 250 | 315 | 315 | 315 | 315 | 400 | 400 | 400 |
| Jaw travel B mm | 6,2 | 6,2 | 6,2 | 6,2 | 6,2 | 6,2 | 6,2 | 6,2 | 7,5 | 7,5 | 7,5 |
| C mm | 128 | 128 | 130 | 130 | 128 | 130 | 139 | 143 | 156 | 156 | 156 |
| Mount D | ZA 170 | ZA 220 | KK 6 | KK 8 | ZA 220 | KK 8 | ZA 300 | KK 11 | ZA 380 | KK 11 | KK 15 |
| Wedge stroke K mm | 23 | 23 | 23 | 23 | 23 | 23 | 23 | 23 | 28 | 28 | 28 |
| Through hole M max. mm | 66 | 86 | 66 | 86 | 86 | 86 | 108 | 108 | 165 | 126 | 165 |
| Q mm | M74x1,5 | M94x1,5 | M74x1,5 | M94x1,5 | M94x1,5 | M94x1,5 | M120x1,5 | M120x1,5 | M172x3 | M132x1,5 | M172x3 |
| Maximum draw bar pull kN | 65 | 65 | 65 | 65 | 80 | 80 | 80 | 80 | 110 | 110 | 110 |
| Max. total clamping force kN | 150 | 150 | 150 | 150 | 180 | 180 | 180 | 180 | 250 | 250 | 250 |
| Max. admissible speed min ⁻¹ | 5000 | 5000 | 5000 | 5000 | 4200 | 4200 | 4200 | 4200 | 3150 | 3150 | 3150 |
| Moment of inertia J kgm ² | 0,35 | 0,35 | 0,35 | 0,35 | 0,74 | 0,74 | 0,74 | 0,74 | 2,4 | 2,4 | 2,4 |
| Weight without jaws approx. kg | 40 | 40 | 40 | 40 | 56 | 56 | 56 | 56 | 120 | 120 | 120 |

¹⁾ ISO 702-1 (DIN 55026) only (DIN 55021 on request)

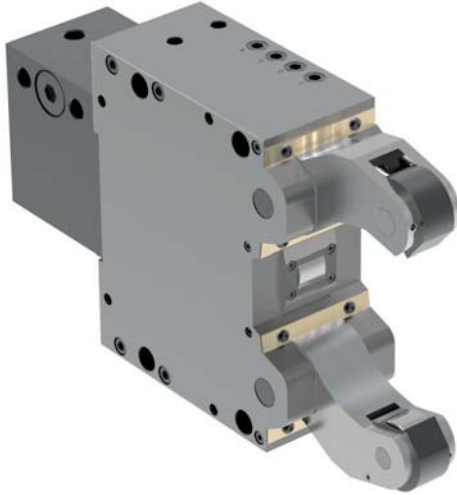


Buy online now:
KFD-HS, serration 90°, cylindrical center mount



Buy online now:
KFD-HS, serration 90°, short taper mount

SLZN - standard design



APPLICATION

Support of slender shafts for rational turning and end machining.

TYPE

Standard version with cylinder mounted at rear.

CUSTOMER BENEFITS

- ③ Large clamping range without change elements
- ③ Operational safety thanks to safety valve, even if pressure drops (SLZ-047 optional)
- ③ Compact and sturdy design for variable use
- ③ High centering precision and repeatability thanks to proven cam lever system
- ③ Resilient chip protection for optimal workpiece wiping (for version „with chip protection“)
- ③ Purge air connection to prevent penetration of dirt inside the steady rest

TECHNICAL FEATURES

- Central lubrication or manual lubrication possible, depending on the operating conditions
- Standard version available with cylindrical or convex rollers
- Available with and without chip protection
- Prepared for end position check, except SLZ-047 (limit switch not included in the scope of delivery)

C 15

Self-centering steady rests SLZN - oil or air operated with mounted cylinder

| Clamping ranges Type | SLZ 047 | SLZN 067 | SLZN 08105 |
|---|-------------------|-------------------|-------------------|
| Clamping range - with chip protection mm | 15-62 | 11-70 | 16-101 |
| Clamping range - without chip protection mm | 4-70 | 6-75 | 8-105 |
| Max. radial clamping range - d_3 mm | 70 | 79 | 105 |
| With chip protectors RZ | 685751 | 1685567 | 1685571 |
| Promotion Price | 2,790.00 € | 2,790.00 € | 3,420.00 € |
| With chip protectors RB | 685752 | 1685568 | 1685572 |
| Promotion Price | 2,790.00 € | 2,790.00 € | 3,420.00 € |
| Without chip protectors RZ | 685753 | 1685569 | 1685573 |
| Promotion Price | 2,610.00 € | 2,610.00 € | 3,240.00 € |
| Without chip protectors RB | 685754 | 1685570 | 1685574 |
| Promotion Price | 2,610.00 € | 2,610.00 € | 3,240.00 € |
| Clamping arm width M mm | 20 | 28 | 35 |
| Roller width N mm | 11,5/9 | 17,5/14 | 20,5/18 |
| Weight kg | 7 | 10 | 14,5 |
| Cylinder-Ø | C40 | C 35 | C50 |
| Cylinder surface area cm ² | 12,5 | 9,6 | 19,6 |
| Max. operating pressure bar | 25 | 54 | 53 |
| Operating pressure bar | 6-20 | 6-30 | 8-30 |
| Clamping force per roller at max. operating pressure N | 830 | 960 | 1960 |
| Max. permissible clamping force per roller N | 1040 | 1700 | 3500 |
| Clamping force per roller at 20 bar N | 830 | 640 | 1300 |
| Centering accuracy over the entire clamping range mm | 0,02* | 0,02* | 0,02* |
| Repeat accuracy for the same clamping-Ø at the same operating pressure mm | 0,005 | 0,005 | 0,005 |
| Max. roller peripheral speed m/min | 800 | 800 | 800 |
| Max. roller peripheral speed at half the max. clamping force per roller m/min | 900 | 900 | 950 |
| Displacement of the geometrical workpiece center in the event of a 20-70% change in the operating pressure /at constant force) mm | 0,02 | 0,02 | 0,02 |

* At constant pressure and clamping force



Buy online now:
Steady rest SLZN standard design

F-senso spindle



Version 1:
F-senso spindle 0-15 kN

Version 2:
F-senso spindle 10-100 kN

APPLICATION

Version 1: Measuring device for SK and HSK spindles of size SK 30; HSK (A) 20, 25, 32, 40.

Version 2: Measuring device for SK and HSK clamping systems of sizes SK 40, 50, 60; HSK (A) 50, 63, 80, 100, 125 and clamping head SPK.

TYPE

Version 1: Measuring range 0-15 kN.

Version 2: Measuring range 10-100 kN.

CUSTOMER BENEFITS

- ⊕ Maximum flexibility due to exchangeable adapters for all HSK and steep-taper sizes
- ⊕ High user-friendliness due to intuitive operation and delivery in a practical case
- ⊕ Simulation of the tool and spindle tolerances possible by a scaled ring

Delivery includes:

- F-senso spindle force measurement device
- Case with space for adapter
- Mounting bar
- Battery

C 15

Pull-in force measurement device F-senso spindle 0-15 kN



| | |
|-------------------------------------|-----------------------|
| Item no. | 1266341 |
| Promotion Price | 2,440.00 € |
| Gross Price | 2,720.00-€ |
| Measuring range / Clamping force kN | 0-15 kN |
| Accuracy | 0,25% (f.s.) |
| Dimensions (base unit) | ca. Ø 66 mm; L=172 mm |



Buy online now:
F-senso spindle, 0-15 kN

C 15

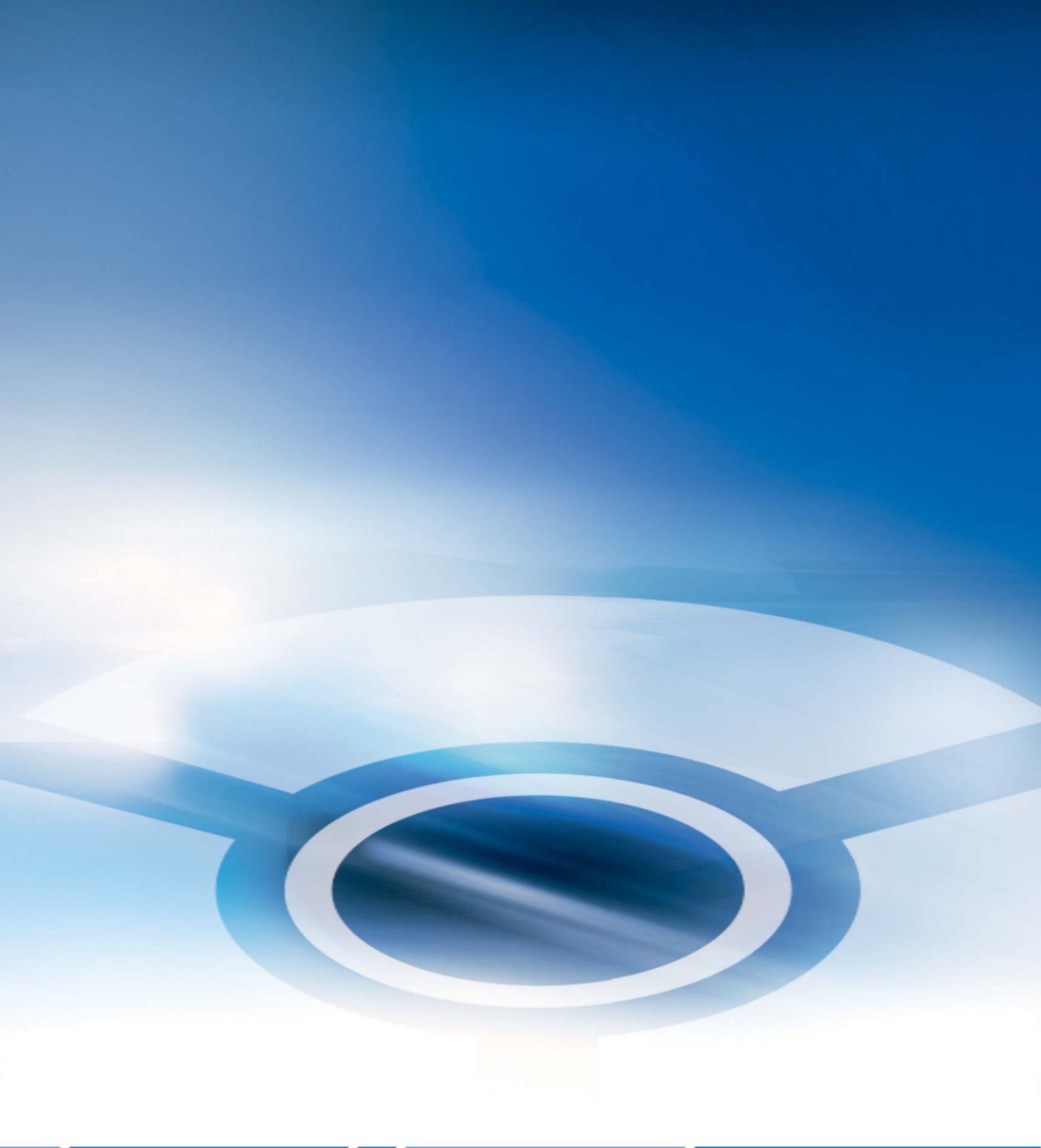
Pull-in force measurement device F-senso spindle 10-100 kN



| | |
|-------------------------------------|-----------------------|
| Item no. | 1255729 |
| Promotion Price | 2,440.00 € |
| Gross Price | 2,720.00-€ |
| Measuring range / Clamping force kN | 10-100 kN |
| Accuracy | 0,25% (f.s.) |
| Dimensions (base unit) | ca. Ø 66 mm; L=189 mm |



Buy online now:
F-senso spindle, 10-100 kN



RÖHM GmbH

Heinrich-Röhm-Straße 50

89567 Sontheim/Brenz

Germany

Tel +49 7325 16 0

Fax +49 7325 16 510

info@roehm.biz

www.roehm.biz



Id.-Nr. 1242443 / 0917 B